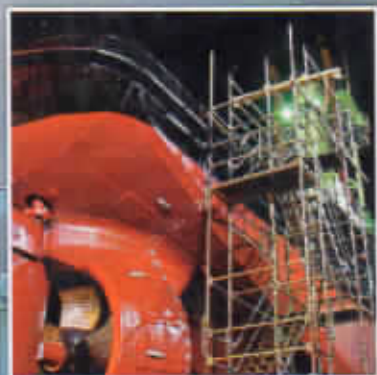
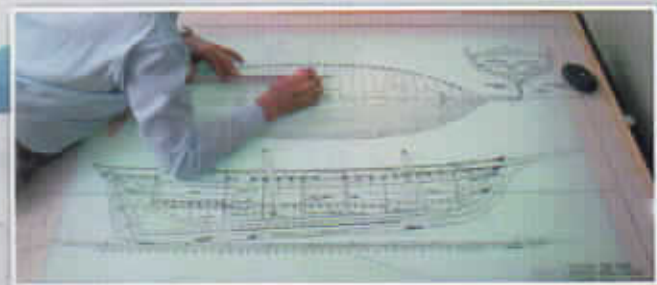


MERCHANT SHIP NAVAL ARCHITECTURE



SHIVEN ARORA

Merchant Ship Naval Architecture

Shiven Arora



VENUS

Venus Books

Publishers & Distributors

NEW DELHI (INDIA)

Contents

<i>Preface</i>	<i>v-vi</i>
1. Merchant Vessel	1
Name Prefixes	1
Merchant Ship Categories	2
Dry Cargo Ships(m/h)	2
2. Dry Cargo	6
Barge	6
Bulk Carrier	9
Lake Freighter	21
Collier (Ship)	32
Container Ship	34
Container Ports	43
Heavy Lift Ship	44
Hopper Barge	45
Lighter Aboard Ship	46
Livestock Carrier	50
Reefer Ship	53
Roll-on/roll-off	60
Submarine Cargo Vessel	64
Train Ferry	64
3. Tanker Types	73
Tanker Ship	73
Chemical Tanker	75
Floating Production Storage and Offloading	76
Gas Carrier	80
LNG Carrier	86
Oil Tanker	93
4. Passenger Ship	111
Types	111

Measures of Size	112
Safety Regulations	113
Design Considerations	113
Cargo Liner	114
Cruise Ship	114
Ferry	124
Narrowboat	132
Ocean Liner	138
5. Support	145
Diving Support Vessel	145
Fireboat	147
Platform Supply Vessel	151
Ship's Tender	152
Towboat	155
Tugboat	156
Automatic Identification System	158
Satellite Navigation	173
6. Other Ship	178
Cable Layer	178
Crane Vessel	178
Dredging	180
Drillship	188
Fishing Vessel	189
Icebreaker	201
Merchant Submarine	209
Narco-submarine	214
Pipe-laying Ship	220
Research Vessel	220
Riverboat	222
Semi-submersible	225
Snagboat	228
7. Naval Architecture	230
Main Subjects	230
Structures	231
Arrangements	231
Construction	231
Science and Craft	231
The Naval Architect	232
Angle of Loll	233
Angle of List	233
Anti-torpedo Bulge	234
Camber (Ship)	235
Capsize Screening Formula	235
Cofferdam	235
Limit of Positive Stability	236
Noise and Vibration on Maritime Vessels	237

Padded V-hull	239
Pneumatic Stabilized Platform	239
Pontoon Effect	240
Response Amplitude Operator	242
Armoured Flight Deck	243
Flare (Ship)	253
Float-out	253
Flush Deck	254
Free Surface Effect	254
Ship Resistance and Propulsion	256
Significant Wave Height	258
Slamming	260
Springing	260
Squat Effect	260
Stability Conditions	261
Submarine Hull	263
Tribon	265
Very Large Floating Structure	266
Watercraft	267
Wave-making Resistance	269
Semi-displacement and Planing Hulls	271
Wave-piercing Hull	272
8. Shipbuilding	273
History	273
Worldwide Shipbuilding Industry	277
Modern Shipbuilding Manufacturing Techniques	279
Ship Repair Industry	280
<i>Index</i>	281

Index

A

Air Pollution 110
Aircushion 267
Aquamarine 4

B

Bulk carriers 2, 10, 12, 13, 14, 19, 20, 23,
25, 28, 31, 34, 35, 36, 39, 40, 41, 102

C

Cargo Ships 2, 10, 14, 34, 36, 38, 39, 51,
56, 57, 60, 62, 64, 114
Cruise Lines 117, 118, 119, 121, 123, 139

D

Deformations 266
Dry cargo ships 2

F

Ferry 5, 61, 63, 64, 65, 67, 68, 69, 70, 72,
124, 125, 126, 127, 128, 129, 130,
131, 132, 144

G

Gas System 105

H

Heavy Lift Ship 44
Hull Designs 104
Hydroelastic 267

I

Inflatable 147

M

Merchant 1, 2, 9, 18, 40, 59, 60, 61, 73,
93, 99, 101, 103, 111, 114, 124, 140,
143
Merchant Vessel 1, 73, 124

O

Offshore 151, 164, 178, 185, 187, 193,
203, 213, 227, 237, 238, 239, 240,
243, 247, 274, 278, 280

P

Passenger Ship 4, 111, 112, 114, 115,
117, 142
Pollution 40, 103, 104, 109, 110

R

Replenishment Ships 108

S

Safety 9, 10, 19, 20, 21, 24, 40, 57, 95,
109, 114, 120, 128, 132, 134, 140,
142, 143, 145, 146
Ship 1, 2, 3, 4, 5, 6, 9, 10, 12, 14, 15, 16,
17, 18, 19, 20, 21, 24, 25, 26, 28, 29,
30, 31, 32, 33, 34, 35, 36, 37, 38, 39,
40, 41, 42, 44, 45, 46, 47, 48, 49, 50,
51, 52, 53, 54, 55, 56, 57, 58, 59, 60,
61, 62, 63, 64, 65, 66, 67, 73, 74, 75,
76, 78, 80, 82, 83, 84, 86, 87, 88, 93,
94, 95, 96, 98, 99, 103, 104, 106, 108,
109, 110, 111, 112, 113, 114, 115,

116, 117, 118, 119, 120, 121, 122,
123, 124, 129, 130, 131, 138, 139,
140, 141, 142, 143, 144, 145, 146

Specialized Ships 3, 116
Submerging Types 44

T

Tank Cleaning 76, 107
Tankers 1, 3, 15, 25, 26, 31, 34, 35, 39,
40, 41, 73, 74, 75, 76, 77, 80, 81, 93,
94, 95, 96, 97, 98, 99, 100, 101, 102,
103, 104, 105, 106, 107, 108, 109,
110, 132
Titan Ocean 102

U

Unloading Cargo 46, 59, 107

V

Virgin Islands 1, 124

